

**ARKANSAS LEVEE STABILIZATION PROJECT
PHASE I**



Levee work looking NW from Dutch Clark Stadium
Crushing operation is located in lower left; Access ramp to the top of the levee lower right. Slopes are being rough graded and the top of the Levee is being graded for the maintenance road. Picture was taken on January 22nd.



Levee work looking SE from Dutch Clark Stadium
This picture was taken on January 22nd showing the progress near the end of Phase I (red arrow). The bottom of the levee has been graded along the toe in preparation for the work in the river.



Pile Driver and Sheet Pile

Pile driver arrived on site on January 26 and was being inspected by ASI Mechanics prior to work starting on January 27. Sheet Pile is shown in the background.



Excavation and Panel Removal

A Track Excavator doing double duty excavating the overburden at the top of the levee and removing panels near the end of the project.



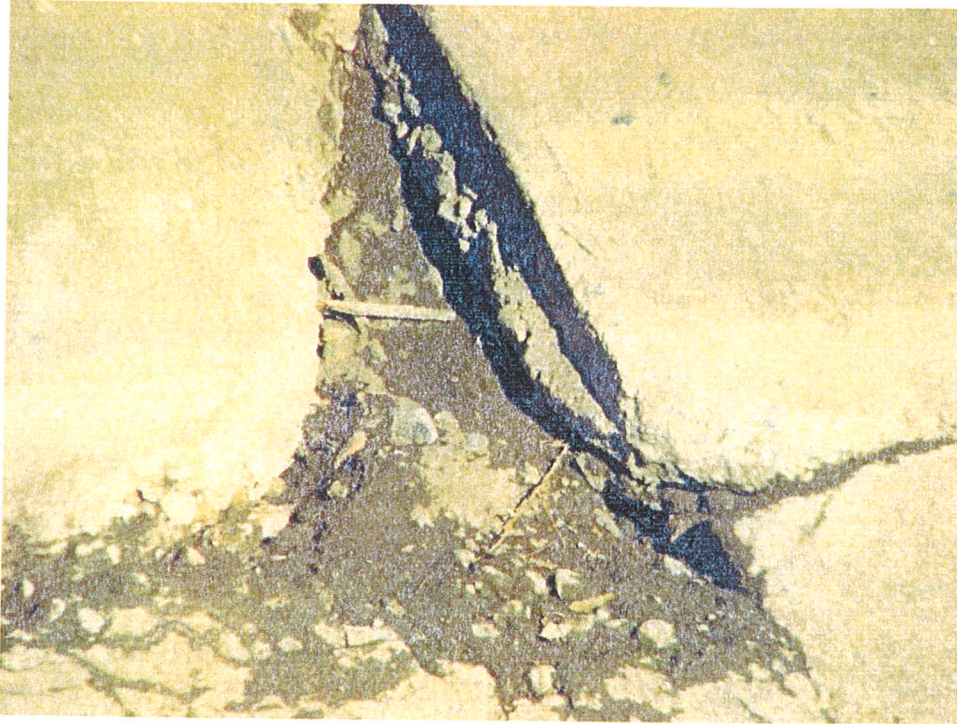
Toe of Levee along the Rail Yard

Work along the toe of the levee on the “dry” side (adjacent to rail road tracks) is being done as that same time as work on top of the levee. Care has been taken to keep the access road used by rail yard employees clear of rubble that slides down the slopes during excavation of the overburden.



Toe of the Levee below water level.

Deterioration of the Levee that was exposed after the Aqua Dam was installed and the water level dropped. A horizontal gap that runs 600 feet along the toe was exposed along with several areas of erosion and cavitations at the construction joints.



Deterioration at the construction joints and keyways

Two pictures showing the deterioration of the joints and keyways along the toe of the levee that were evident after water level dropped. The re bar is corroded or nonexistent in these areas along with voids under the concrete. Similar voids have been exposed in the upper portions of the levee as the panels are being removed.

